

# RLG CANADA



## Streamlining Complex EPR Reporting



REVERSE LOGISTICS GROUP

# Reconomy Group - Where does RLG fit?

## RECYCLE

Tech-enabled total waste and resource management services

01

Construction



Business & Industry



EcoVend EcoTec

## COMPLY

Global environmental compliance and sustainability consultancy

02



a Reconomy Group company



REVERSE LOGISTICS GROUP



## REUSE

Sustainable omni-channel product returns and intelligent logistics

03



a Reconomy Group company



a Reconomy Group company



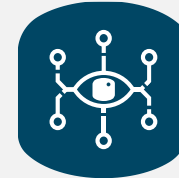
intelligent supply chain

a Reconomy Group company



## Environmental Compliance

Giving you the support and tools to comply with environmental legislation.



## Data Management

Fulfilling data requirements and future-proofing your business with valuable insight and reporting.



## Deposit Returns

Helping you implement or operate a successful deposit return system.



## Consultancy & Advice

Working together to enhance your business with bespoke consultancy.

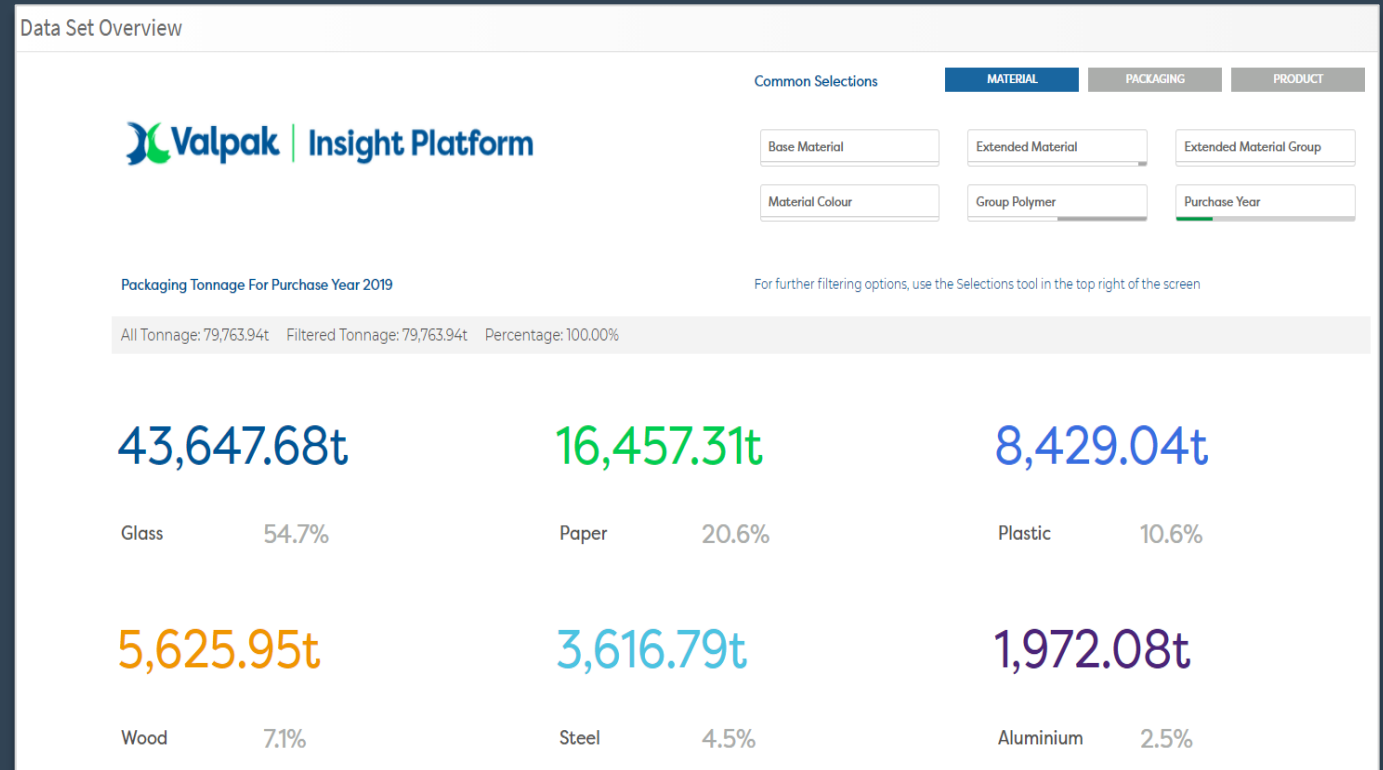


## Circular Take-Back

Collecting, handling and driving solutions to put materials into the recycling loop.

# Data Management - Transparency and Reporting

- Reporting PTM data is an essential functional element. Data correctness avoids over reporting while ensuring compliance.
- Correct packaging data assurance is challenging.
- There is great opportunity to use data beyond compliance.
  - Proactive optimization of recyclability
  - Active management of ecomodulated fees
  - Constant CO2 footprint improvement



Our Insight Platform is a customisable, online reporting tool, that offers transparency and access to granular data at SKU level and allows for advanced cost modelling for current and future EPR legislation reporting requirements.

# In Store Product Returns - Unique Opportunity



- Convenient return possibilities drive circularity and consumer traffic.
- Beverage container collection delivers by efficiency and material quality for recycling.
- Achieving marketing and consumer loyalty aspirations in connection with data insight.
- Future ready for potential DRS Regulations
- Support ESG and Sustainability goals.

# Thank you

+1 647 501 8519



Canada@rev-log.com

